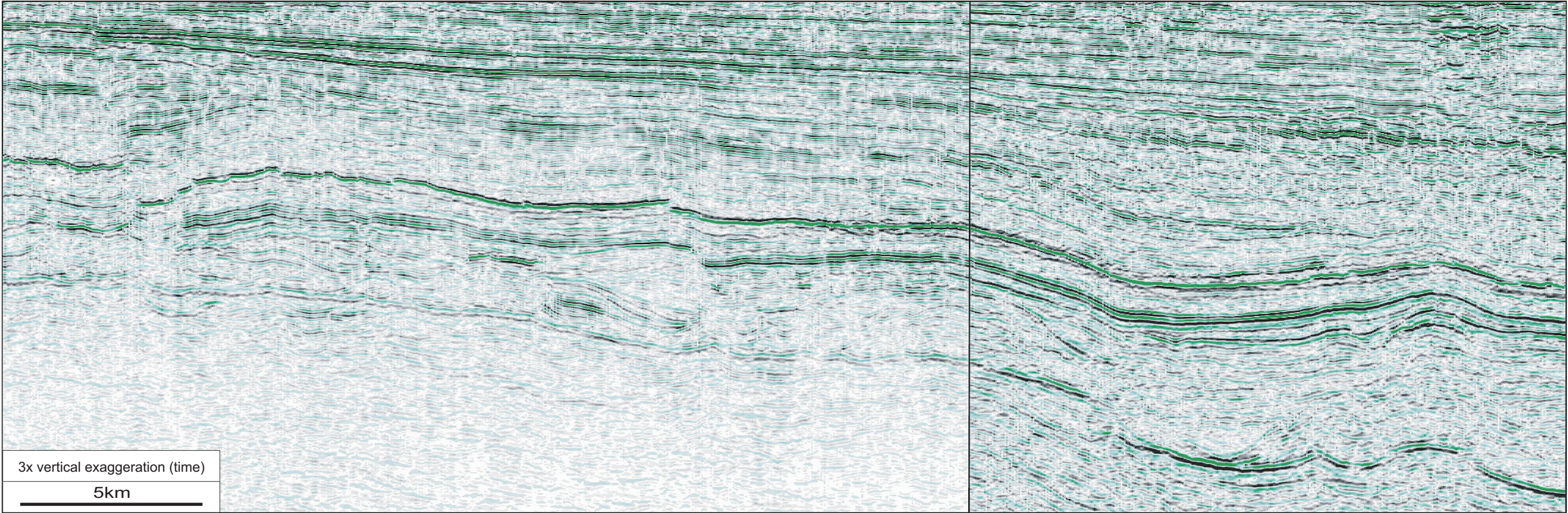


1. Interpret the whole seismic image. *Please focus your interpretation on the geological evolution of the section.*



Finally, please answer the questions below after you have completed the seismic interpretation exercise.

i) How long did you spend *interpreting the seismic image*? \_\_\_\_\_ minutes

ii) Would you have liked more time?    Yes ☐    No ☐

iii) What is your confidence in your interpretation?  
Very Confident ☐    Confident ☐    Satisfied ☐    Doubtful ☐    Totally unsure ☐

iv) Have you seen this seismic image before?    Yes ☐    No ☐    Not Sure ☐  
Where? \_\_\_\_\_

v) Have you interpreted this seismic image before?    Yes ☐    No ☐    Not Sure ☐  
Where? \_\_\_\_\_

vi) Did you see Euan’s presentation at the DEVEX conference (11-12th May in Aberdeen)?  
Yes ☐    No ☐    Not Sure ☐

2. Summarise the geological evolution below.